



دکرهني ، اوبولگولو او مالداري وزارت
وزارت زراعت ، آبياري و مالداري

دافغانستان اسلامي جمهوريت
جمهوري اسلامي افغانستان

Islamic Republic of Afghanistan
Ministry of Agriculture, Irrigation and Livestock



نشریه قیمت های محصولات زراعتی

(سال ۶ : شماره ۱)

Agricultural Commodity Price Bulletin

(Year 6 : Volume 1)

**Ministry of Agriculture, Irrigation and Livestock
General Department of Policy and Planning
Statistics and Marketing Information Office**

Kabul, 17 January 2010



Abbreviations

DAP	Diammonium Phosphate
EC	European Commission
FAAHM	Food, Agriculture and Animal Husbandry Information Management Unit
FAO	Food and Agriculture Organization of the United Nations
MAIL	Ministry of Agriculture, Irrigation and Livestock
USDA	United States Department of Agriculture
WFP	World Food Program

Contact

Haqiqatpal Ghulam Rabbani, Director
Statistics and Marketing Information Office, MAIL

Rabani.Haqiqatpal@gmail.com

Mobile: +93(0)700 284 879

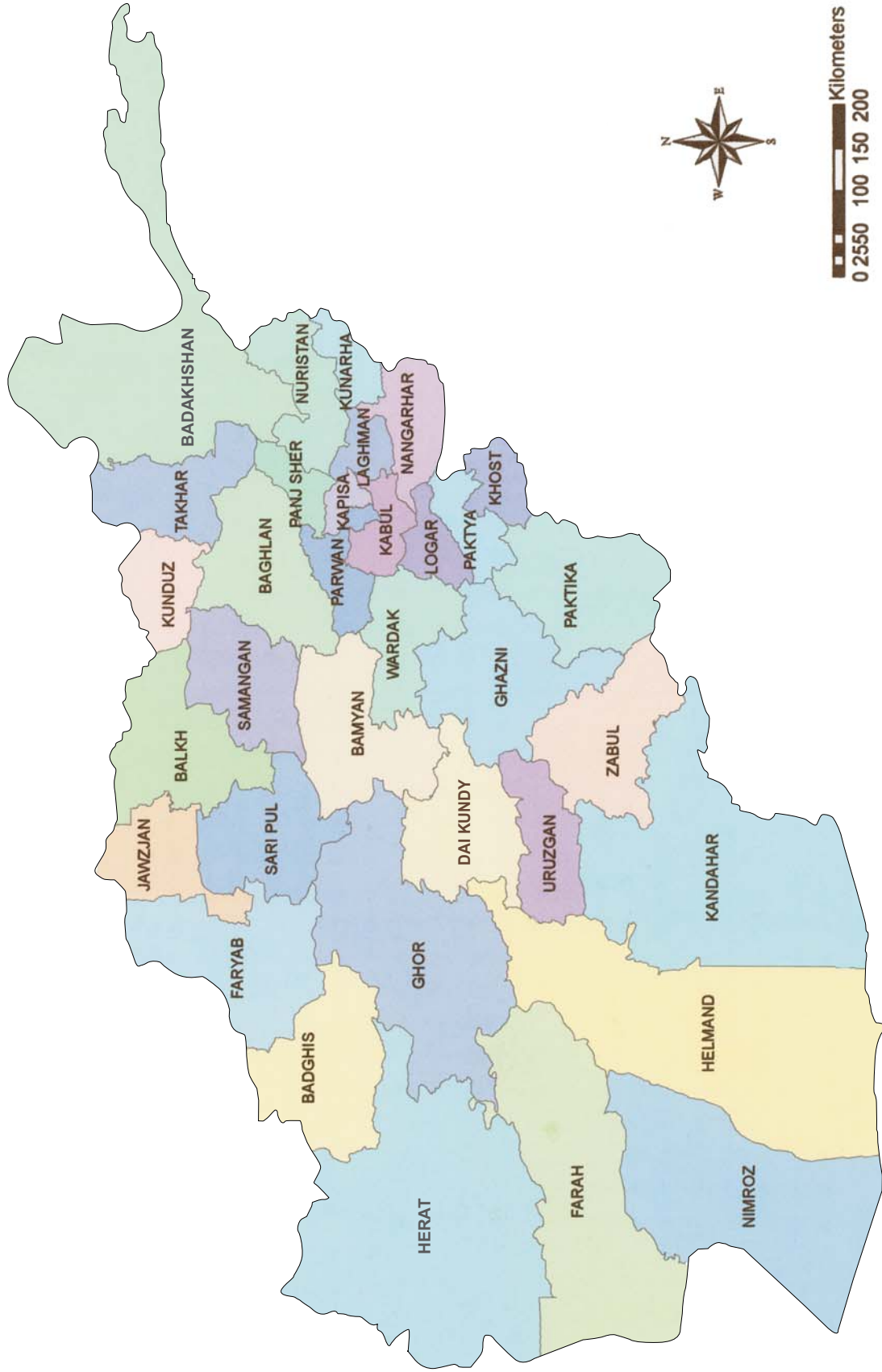


**“Support to FAAHM in Developing an Agricultural Statistics and Market Information System”
(GCP/AFG/042/EC)**

The FAO project mentioned above provides technical guidance and financial support for the publication of this bulletin. The project is funded by the European Commission.

*FAAHM bulletins and reports are available at:
<http://www.mail.gov.af/m/english/English.htm>
http://www.fao.org/world/afghanistan/agteo_en.htm*

MAP OF AFGHANISTAN



Kilometers
0 25 50 100 150 200

Source: Central Statistics Office

CONTENTS

Map of Afghanistan

Summary Table 1: Commodity retail market prices (Afs/Kg.) in December 2009

Summary Table 2: Retail market prices of wheat, beef and mutton in January 2010

Summary Table 3: Wholesale market price of wheat in Peshawar in October 09 – January 2010

Summary Table 4: Average fob price of wheat in the international market in 2008 and 2009

1.	Consumer Price Index (CPI).....	1
2.	Price of agricultural commodities.....	3
2.1.	Price of wheat	3
2.2.	Price of fruits and vegetables	6
2.3.	Price of livestock and livestock products	6
2.4.	Cost of agricultural labour, casual labour and fertilizer.....	6

Annexes

Annex I: Consumer Price Index (CPI) by location (December 2008 - December 2009)

Annex II: National Consumer Price Index (CPI) by item (December 2008 - December 2009)

Annex III: Kabul Consumer Price Index (December 2008 - December 2009)

Annex IV: Retail market price of agricultural commodities in provincial centers in December 2009

Annex V: Retail market prices of selected agricultural commodities in Week 2 of January 2010

Annex VI: Agricultural commodity Prices in border towns in December 2009

Annex VII: Weekly retail market prices of fruits and vegetables in Kabul, Kunduz, Herat, Kandahar and Jalalabad in December 09/January 10

Annex VIII: Weekly market price of agricultural commodities (October 09 to Week 1 of January 10)

Annex IX: Monthly price of wheat on global markets (January 2004-December 2009)

Summary Table 1: Agricultural commodity retail market prices (Afs/Kg.) in December 2009

Commodity	Region	Reporting month	Last month	Last year same month	% change on	
					Last month	Last year same month
		(i.e. Dec 09)	(Nov 09)	(Dec 08)	(Nov 09)	(Dec 08)
Wheat	North	14.2	14.2	28.4	0.0	-50.0
Wheat	North-East	15.3	15.5	29.5	-1.6	-48.3
Wheat	West	15.3	14.3	28.0	7.0	-45.2
Wheat	West-Central	17.5	17.0	32.0	2.9	-45.3
Wheat	Central	16.2	17.2	28.7	-5.8	-43.6
Wheat	South	17.5	17.8	26.8	-1.4	-34.6
Wheat	East	18.0	18.5	25.5	-2.7	-29.4
Wheat	South-West	17.0	16.8	31.7	1.0	-46.3
Wheat	Overall	16.3	16.4	28.8	-0.9	-43.4
Beef	Overall	152.0	150.9	133.9	0.7	13.5
Mutton	Overall	201.5	200.7	181.5	0.4	11.0
Chicken	Overall	110.4	111.1	107.5	-0.6	2.7
Agri. Labor	Overall	216.6	215.2	191.2	0.6	13.3
Urea	Overall	16.6	16.9	19.0	-2.1	-12.7
DAP	Overall	32.3	31.6	45.3	2.2	-28.6

Summary Table 2: Price of wheat, beef and mutton on 14 January 2010

Commodity	Region	Price (Afs/kg)		
		Wheat	Beef	Mutton
Wheat	North	14.0	162.0	204.0
Wheat	North-East	14.5	162.5	202.5
Wheat	West	13.7	160.0	243.3
Wheat	West-Central	16.5	155.0	185.0
Wheat	Central	15.2	145.0	210.8
Wheat	South	17.0	130.8	202.5
Wheat	East	16.5	144.8	186.0
Wheat	South-West	17.3	162.5	228.3
Wheat	Overall	15.6	152.9	209.4

Summary Table 3: Wholesale market price of wheat in Peshawar (Rs/40 Kg.)

Jan 10	Dec 09	Nov 09	Oct 09
901	893	650	740

Summary Table 4: Price of wheat in the international market, 2008 and 2009

Description	Wheat fob prices (US\$/tonne)		
	Argentina up river	US Hard Red Winter (HRW)	US Soft Red Winter (SRW)
Average price in 2008	281.21	344.58	268.59
Average price in 2009	218.75	235.58	185.67
% change on 2008	-22.2	-31.6	-30.9

Agricultural Commodity Price Bulletin
(Year 6: Volume 1)

1. Consumer Price Index (CPI)

National Consumer Price Index (CPI)¹ in December 2009 was 25.4 percent points lower than in December 2008. The annual drop in the national food index was 43.8 percent points, which was mainly due to a fall in the price of wheat in local markets. Among food items, annual drop in the “Bread and Cereals” index was 93.8 percent points.

The non-food index showed an increase of 3.7% and the annual decrease in exchange-rate index was 7.2 per cent points. (Table 1/Annex I&II)

Table 1: CPI in December 2009 compared with CPIs in December 2008 and November 2009

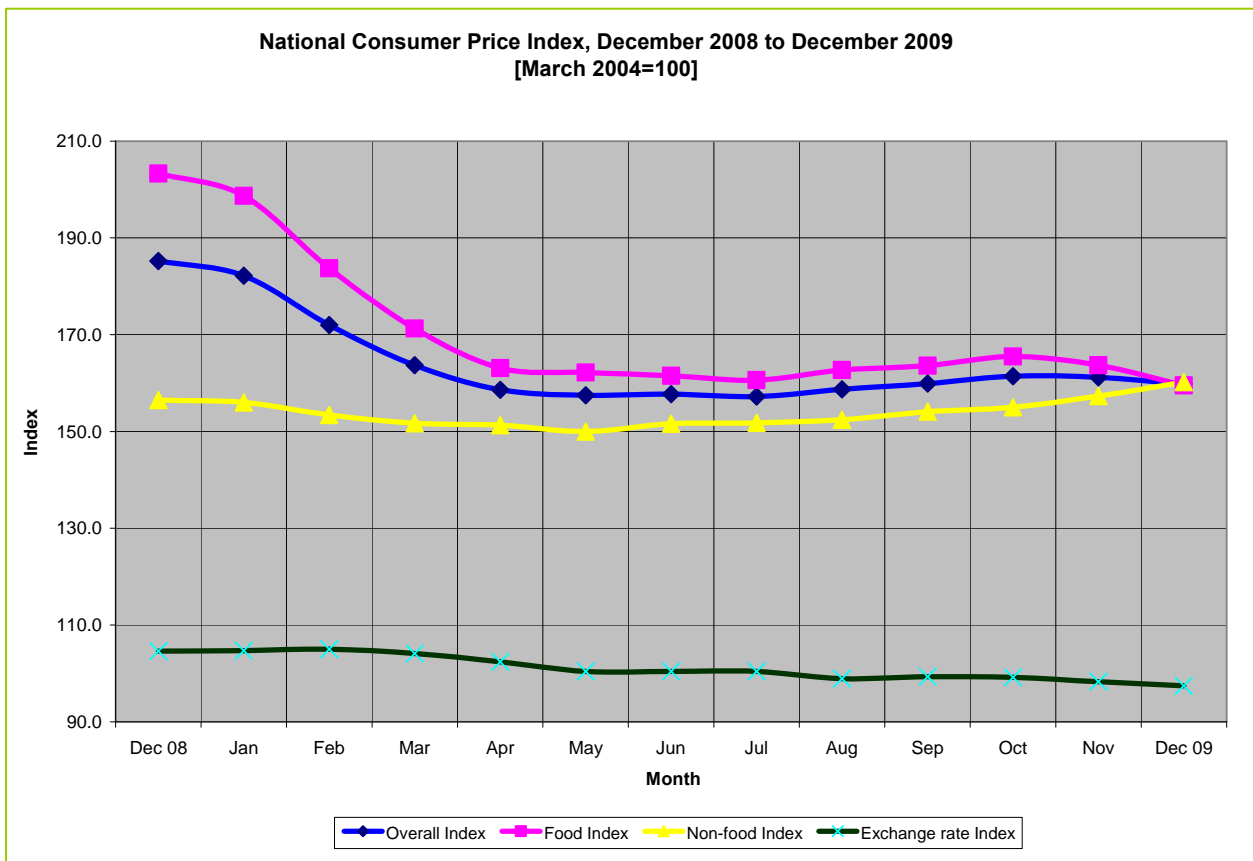
Description	Percent point change in December 09 CPI	
	On Dec 2008	On Nov 2009
	(Last year)	(Last month)
OVERALL INDEX	-25.4	-1.4
Food Index	-43.8	-4.2
Bread and cereals	-93.8	-9.8
Meat	6.7	0.5
Milk, cheese and eggs	-3.6	-0.8
Oils and fats	-18.7	0.5
Fresh and dried fruits	4.2	-5.4
Vegetables including tubers	-18.5	6.0
Sugar and sweets	28.7	5.1
Spices	1.7	0.2
Non-alcoholic beverages	5.6	1.0
Cigarettes and tobacco	12.3	-0.1
Non-food Index	3.7	2.9
Exchange rate Index	-7.2	-0.9

Source: Central Statistics Organization (CSO)

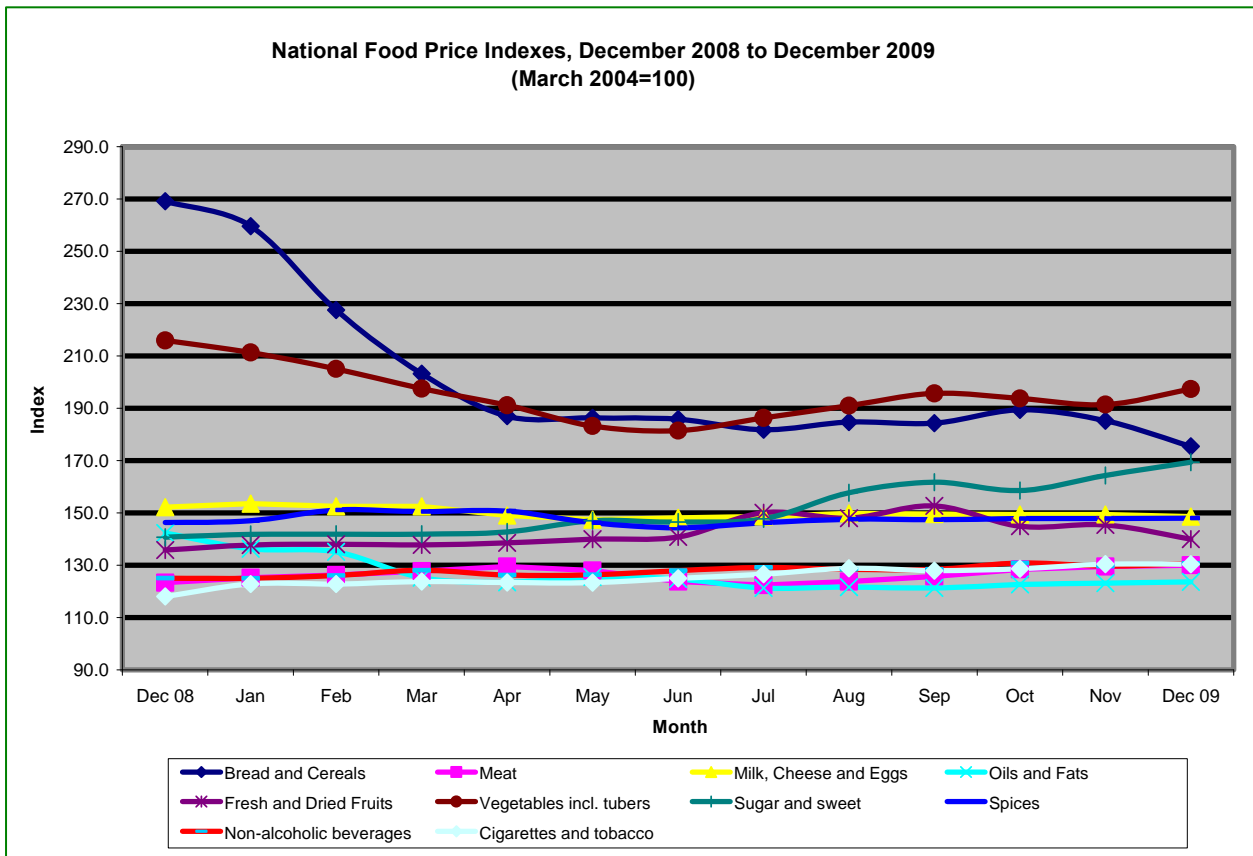
There was 43.8% fall in the price index of food items in December 09 compared to December 08. Annual changes in the food indexes were as follows: Bread and cereals (-93.8 percent points); Oil and fats (-18.7); Vegetables including tubers (-18.5); Milk, cheese and eggs (-3.6); Spices (+1.7 percent points); Fresh and dry fruits (+4.2); Non-alcoholic beverages (+5.6); Meat (+6.7); Cigarettes and tobacco (+12.3) and Sugar and sweets (+28.7). (Table 1)

Overall CPI decreased by 1.4 percent point from November to December 2009, with a decrease in the food index by 4.2 percent points and an increase in non-food indexes by 2.9 percent points. “Bread and cereal” index showed a decrease of 9.8% in that one month’s period. (Table 1/Annex II)

¹Consumer Price Index (CPI) is an index of the price of consumer goods and services. It can be used to measure the rate of inflation or the cost of living.



Source: Central Statistics Office



Source: Central Statistics Office

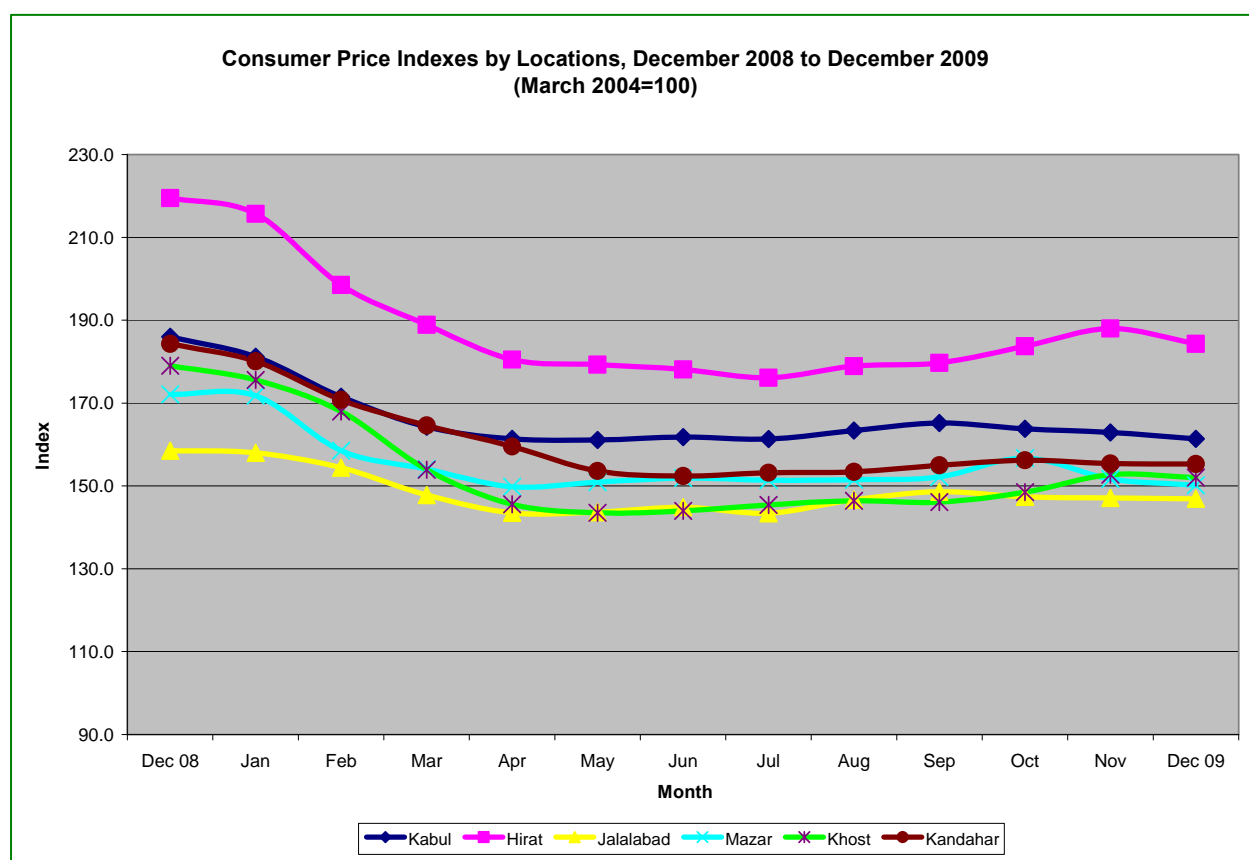
Of the six locations with CPI data, the highest four annual drops in CPI in October 09 were observed in Herat (35.2 percent points), Kandahar (29.0), Khost (27.0) and Kabul (24.6). These decreases were

mainly due to a drop in the price of wheat. The highest annual falls in the food indexes were reported from Herat (58.3), Kandahar (50.8), Mazar (41.3) and Kabul (40.9). There were reasonable annual changes in CPI of non-food items in the reporting month with the exception of Khost (-5.0%). (Table 2/Annex I/II)

Table 2: CPI in October 2009 compared to CPIs in October 2008 and September 2009

Location	% points change					
	Overall Index		Food Index		Non-Food Index	
	On Oct 08	On Sep 09	On Oct 08	On Sep 09	On Oct 08	On Sep 09
National	-25.4	-1.4	-43.8	-4.2	3.7	2.9
Kabul	-24.6	-1.5	-40.9	-3.6	11.3	2.0
Herat	-35.2	-3.7	-58.3	-8.3	1.2	3.5
Jalalabad	-11.6	-0.2	-15.2	-2.7	10.0	3.7
Mazar	-21.9	-1.5	-41.3	-5.6	9.2	5.1
Khost	-27.0	-0.7	-40.8	-1.4	-5.0	0.4
Kandahar	-29.0	-0.1	-50.8	-1.5	5.6	2.1

Source: Central Statistics Office



Source: Central Statistics Office

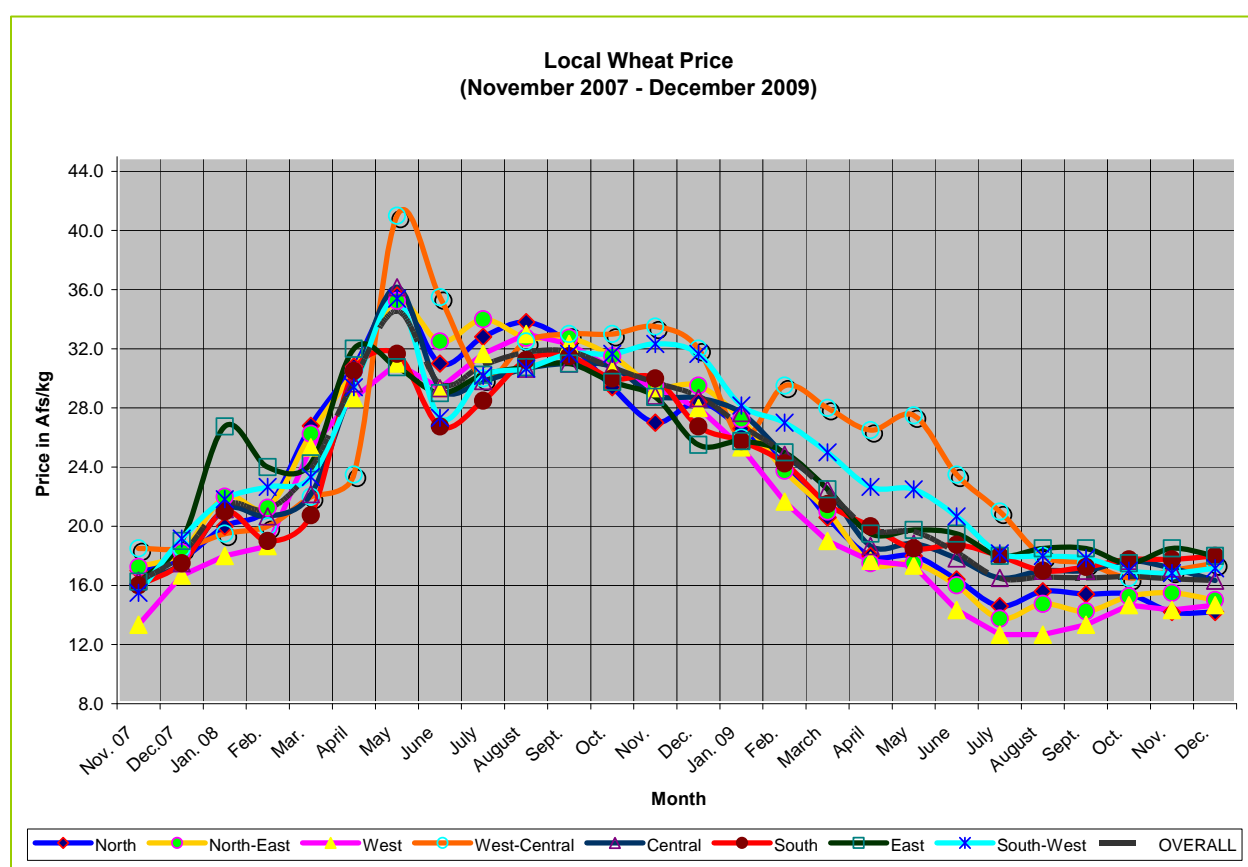
2. Price of agricultural commodities

2.1. Price of wheat

The national average price of wheat in December is Afs 16.3 Afs/kg with an annual decrease of 43.4% in its price. (Summary Table 1 and Table 3) The price of local wheat has stabilized since early July 09. There was some decrease in its price in January 2010, but given the poor production prospects of wheat this year and the price trend in Pakistan (Summary Table 3), the price of wheat is very likely to rise in coming months. Weekly market prices of wheat in nine markets reported by WFP for the past three months are shown on Annex: Page 10.

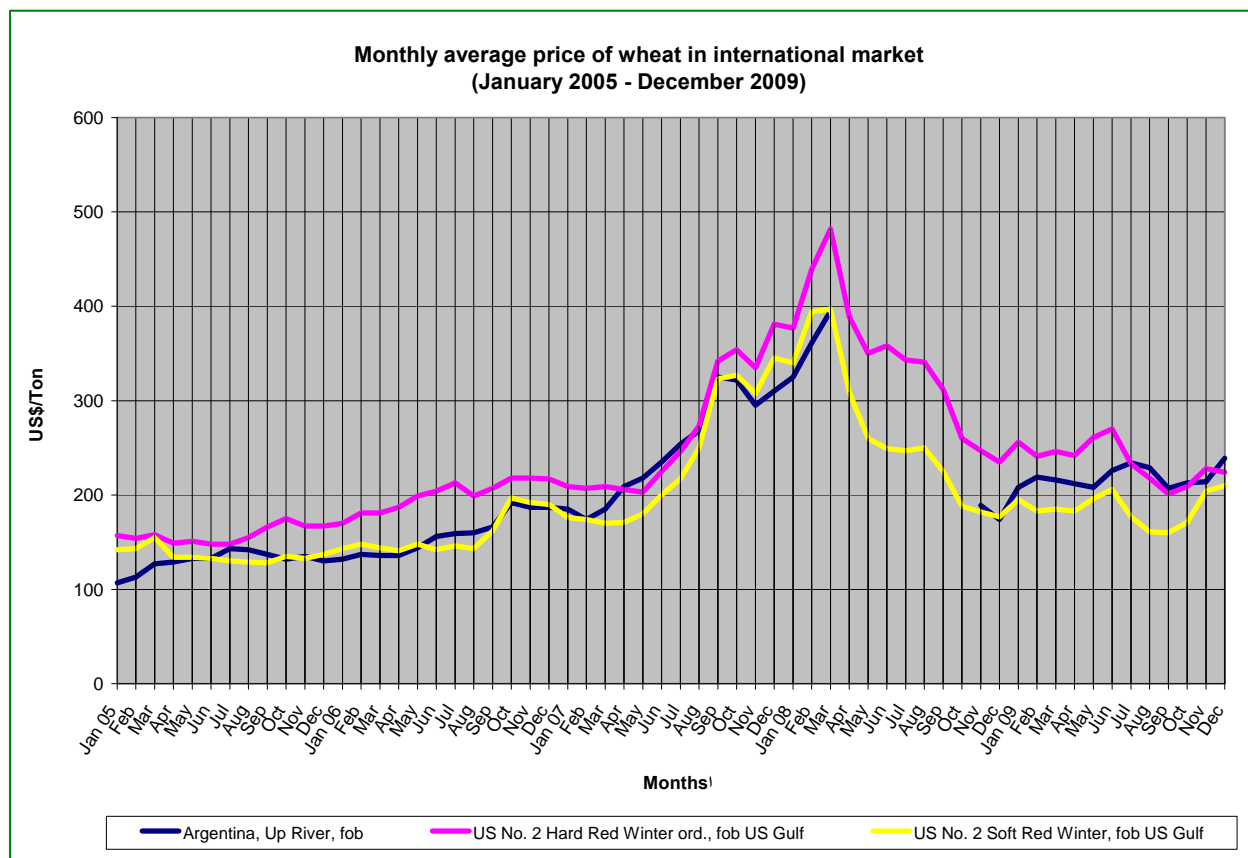
Table 3: Price of local wheat (Afs/Kg) (Source: FAAHM)

Region	Dec 2008	Nov 2009	Dec 2009	Jan 2010	% Change in price in Dec 09	
	(Afs)	(Afs)	(Afs)	(Afs)	On Nov 09 (Last month)	On Dec 08 (Last year same month)
North	28.4	14.2	14.2	14.0	0.0	-50.0
North-East	29.5	15.5	15.3	14.5	-1.6	-48.3
West	28.0	14.3	15.3	13.7	7.0	-45.2
West-Central	32.0	17.0	17.5	16.5	2.9	-45.3
Central	28.7	17.2	16.2	15.2	-5.8	-43.6
South	26.8	17.8	17.5	17.0	-1.4	-34.6
East	25.5	18.5	18.0	16.5	-2.7	-29.4
South-West	31.7	16.8	17.0	17.3	1.0	-46.3
Overall	28.8	16.4	16.3	15.6	-0.9	-43.4



Source: FAAHM

The trend of international wheat price shows some increasing tendency since November 09. The price of wheat (US No. 2 Hard Red Winter and US No. 2 Soft Red Winter) in the global market showed a generally downward trend from March 2008, with drops by 8.5% to 10% in September; 12% to 17% in October; 3% to 8% in November/December 08. This was followed by a slight rise in its price in January 09. The price virtually stabilized from February through May 09. In June 09 there was some increase in the price, but it slumped in July thru October 09. (Graph below; Annex IX)



Annual trend of wheat price on global markets showed a consistently increasing movement from 2005-2008. The highest annual increase in its price was seen in 2007. Compared to its price in 2005, the price in 2008 was almost double, on average. However, the average price of wheat in 2009 in the international market was lower than in 2008 by about 22 to 32%. (Table 4)

Table 4: Price of wheat on global markets, 2005-2009

Year	Description	Wheat fob prices (US\$/tonne)		
		Argentina up river	US Hard Red Winter	US Soft Red Winter
2004	Average price	138.12	161.31	145.27
2005	Average price	130.44	157.81	135.93
2006	Average price	157.67	199.65	158.15
	% change on 2005	20.9	26.5	16.3
2007	Average price	246.59	263.8	234.76
	% change on 2006	56.4	32.1	48.4
2008	Average price	281.21	344.58	268.59
	% change on 2007	14.0	30.6	14.4
2009	Average price up to November 2009	218.75	235.58	185.67
	% change on 2008	-22.2	-31.6	-30.9

Source: International Grain Council and USDA

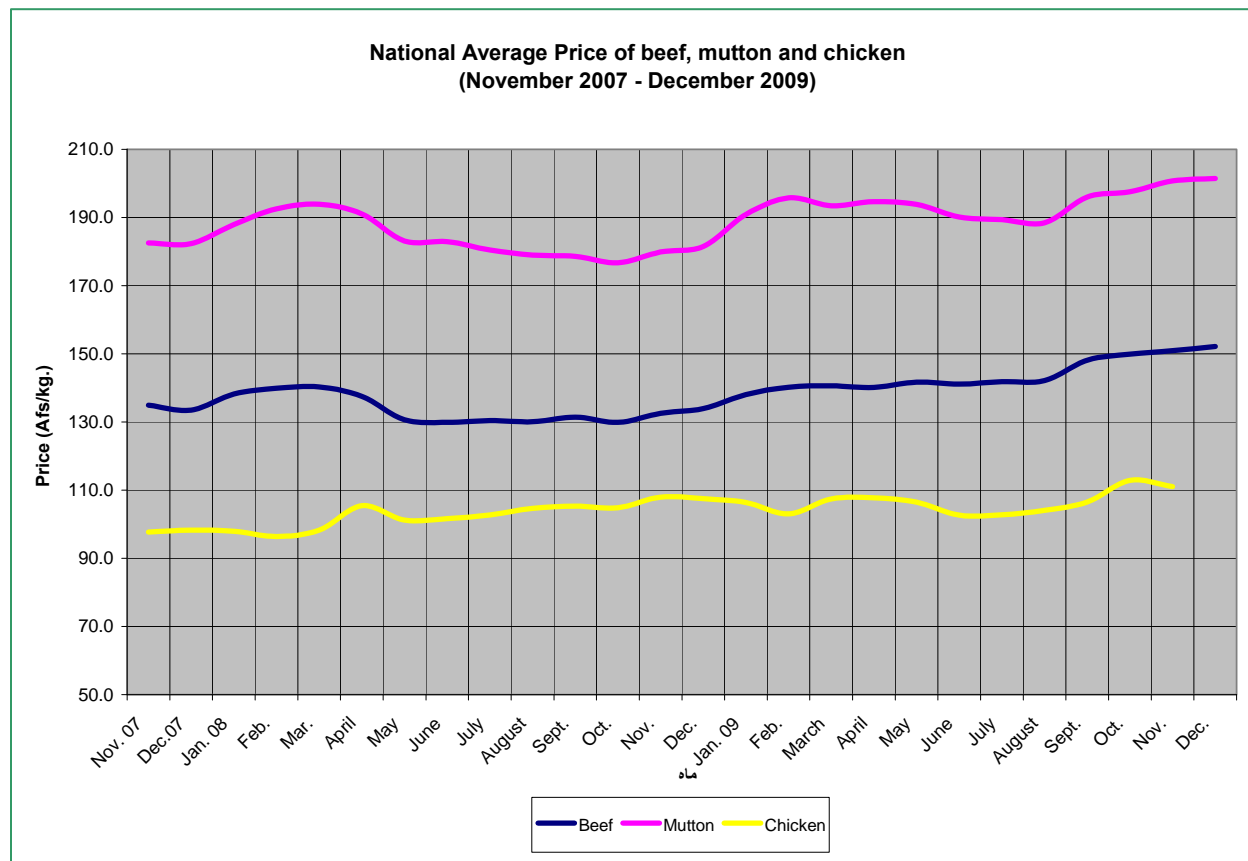
Market prices of various commodities for the following border markets in December 2009 are shown in Annex VI: Herat, Islam Qala and Torghondi; Kunduz: Shirkhan; Balkh: Hairatan; Nangarhar: Torkhan.

2.2. Price of fruits and vegetables

Prices of various types of fruits and vegetables in Kabul, Kunduz, Herat, Kandahar and Jalalabad markets in December 09/January 10 are presented in Annex VII.

2.3. Price of livestock and livestock products

Beef and mutton prices exhibited a lack of change in December. The national average prices of meat were: beef Afs 152/kg (0.7% up compared to the last month), mutton/lamb 202/kg (0.4% up), and chicken Afs 110/kg (0.6% down). (Summary Table 1/2)



2.4. Cost of agricultural labour, casual labour and fertilizer²

Virtually no change was observed in the costs/prices of agricultural labour and fertilizers. The average cost of agricultural labor in December 09 was Afs 217/day. The price of best quality, imported urea and DAP were Afs 17 and Afs 32/kg.

² Price per bag expressed in Afs/kg

Annex I: Consumer Price Index (CPI) for December 2008 - December 2009 by location

(March 2004 = 100)

	Dec 2008	Jan 2009	Feb 2009	Mar 2009	Apr 2009	May 2009	Jun 2009	Jul 2009	Aug 2009	Sep 2009	Oct 2009	Nov 2009	Dec 2009
National													
Overall Index	185.2	182.2	172.0	163.7	158.6	157.5	157.7	157.2	158.7	159.9	161.4	161.2	159.8
- Food	203.3	198.7	183.7	171.3	163.1	162.2	161.5	160.6	162.7	163.6	165.5	163.7	159.5
- Non-Food	156.5	156.0	153.4	151.7	151.3	150.0	151.6	151.8	152.4	154.1	155.0	157.3	160.2
Kabul													
Overall Index	186.0	181.2	171.5	164.3	161.4	161.1	161.8	161.3	163.4	165.2	163.8	162.9	161.4
- Food	197.9	190.6	177.2	165.9	161.9	162.0	161.7	161.2	163.7	165.5	162.7	160.6	157.0
- Non-Food	157.2	166.4	162.3	161.7	160.6	159.6	162.0	161.4	162.9	164.7	165.5	166.5	168.5
Herat													
Overall Index	219.5	215.7	198.5	188.9	180.5	179.3	178.1	176.1	178.9	179.7	183.7	188.0	184.3
- Food	251.5	245.7	221.2	207.4	193.8	192.1	189.9	186.9	191.0	192.1	197.8	201.5	193.2
- Non-Food	169.0	168.1	162.4	159.5	159.4	159.1	159.2	158.6	159.8	160.0	161.4	166.7	170.2
Jalalabad													
Overall Index	158.5	158.0	154.4	147.8	143.5	143.7	144.9	143.4	146.7	148.6	147.4	147.1	146.9
- Food	157.8	166.0	160.4	150.1	144.1	145.5	146.6	144.4	149.3	148.6	146.4	145.3	142.6
- Non-Food	143.7	145.3	145.0	144.1	142.5	140.8	142.2	141.8	142.6	148.8	149.0	150.0	153.7
Mazar													
Overall Index	172.1	171.8	158.5	154.1	149.8	150.9	151.9	151.4	151.5	152.2	156.7	151.7	150.2
- Food	191.5	192.4	171.6	165.9	157.8	160.2	160.4	158.0	157.6	157.8	165.5	155.8	150.2
- Non-Food	141.1	139.0	137.7	135.4	137.1	136.1	138.3	141.1	141.7	143.2	142.7	145.2	150.3
Khost													
Overall Index	179.0	175.6	168.0	153.9	145.6	143.5	144.0	145.4	146.4	146.1	148.5	152.7	152.0
- Food	192.5	188.1	157.7	155.9	143.4	141.6	141.7	144.5	146.0	144.9	147.8	153.1	151.7
- Non-Food	157.6	155.9	155.9	150.7	149.2	146.6	147.5	146.8	147.0	147.9	149.7	152.2	152.6
Kadahar													
Overall Index	184.3	180.1	170.8	164.6	159.5	153.6	152.4	153.2	153.4	155.0	156.2	155.4	155.3
- Food	205.7	197.5	182.9	172.5	164.6	156.2	153.6	154.8	155.8	158.2	158.6	156.4	154.9
- Non-Food	150.4	152.5	151.6	152.1	151.6	149.4	150.5	150.5	149.8	150.1	152.4	153.9	156.0

Source: Central Statistics Office

Annex II: National Consumer Price Index (CPI) for December 2008 - December 2009 by item
(March 2004 = 100)

	Weight	Dec 2008	Jan 2009	Feb 2009	Mar 2009	Apr 2009	May 2009	Jun 2009	Jul 2009	Aug 2009	Sep 2009	Oct 2009	Nov 2009	Dec 2009
Overall Index	100.0	185.2	182.2	172.0	163.7	158.6	157.5	157.7	157.2	158.7	159.9	161.4	161.2	159.8
Food	61.3	203.3	198.7	183.7	171.3	163.1	162.2	161.5	160.6	162.7	163.6	165.5	163.7	159.5
Bread and Cereals	28.0	269.2	259.6	227.6	203.2	187.0	186.3	185.8	181.8	184.7	184.3	189.4	185.2	175.4
Meat	6.0	123.3	125.2	126.2	127.7	129.5	128.0	123.7	122.4	123.7	125.7	128.4	129.5	130.0
Milk, cheese and eggs	5.6	152.2	153.5	152.5	152.5	149.0	147.4	148.1	148.7	149.8	149.6	149.4	149.4	148.6
Oils and fats	5.3	142.3	136.3	135.1	125.2	123.5	125.5	124.7	121.3	121.6	121.3	122.6	123.1	123.6
Fresh and dried fruits	4.9	135.8	137.7	138.0	137.8	138.5	140.0	140.8	150.1	148.0	152.7	144.9	145.4	140.0
Vegetables incl. tubers	4.9	215.9	211.3	205.1	197.5	191.2	183.2	181.5	186.3	191.0	195.7	193.8	191.4	197.4
Sugar and sweets	1.8	140.7	141.8	141.9	141.9	142.7	147.0	146.5	147.7	157.7	161.7	158.5	164.3	169.4
Spices	1.1	146.3	147.0	151.1	150.5	150.7	146.2	144.3	146.2	147.6	147.4	147.8	147.8	148.0
Non-alcoholic beverages	2.0	125.1	125.0	126.1	128.1	126.2	126.3	127.9	129.2	128.4	128.4	130.8	129.7	130.7
Cigarettes and tobacco	1.7	118.0	122.8	122.8	123.7	123.4	123.3	125.0	126.6	128.8	127.9	128.7	130.4	130.3
Non-Food	38.7	156.5	156.0	153.4	151.7	151.3	150.0	151.6	151.8	152.4	154.1	155.0	157.3	160.2
Clothing	7.2	125.1	125.2	125.2	126.9	128.3	126.0	125.5	124.8	124.8	125.9	126.3	127.6	127.8
Housing	17.2	175.7	175.4	172.1	167.6	166.8	165.5	168.0	168.9	170.1	173.2	174.2	177.9	183.3
- Rent	7.1	160.5	161.1	162.1	158.9	159.9	158.7	159.0	162.3	163.8	168.0	169.3	169.0	168.6
-Construction material	3.2	134.2	133.5	132.0	132.1	131.7	131.6	131.5	129.9	130.2	129.3	127.8	127.8	129.3
-Electricity and fuels	6.8	211.4	210.1	201.6	193.5	190.7	188.7	194.7	194.3	195.7	199.4	201.3	211.0	224.2
Household goods	7.0	121.3	121.8	122.5	122.5	123.1	122.7	122.3	122.8	123.4	123.7	123.7	122.9	122.6
Health	2.0	160.4	165.1	162.6	167.0	166.7	166.8	164.6	162.9	163.4	162.5	163.7	162.7	162.4
Transportation	2.3	254.0	240.4	222.1	217.1	209.6	20.8	217.3	216.6	215.2	215.9	221.7	231.0	238.2
Communication	0.9	108.6	108.6	108.6	108.6	109.4	109.4	109.9	109.9	109.9	109.9	109.9	109.9	109.9
Education	1.2	108.3	108.9	109.1	109.2	109.2	108.4	110.2	109.7	109.6	109.7	109.6	109.2	108.4
Miscellaneous	0.9	168.7	171.5	171.8	172.5	176.4	176.4	175.3	175.0	174.9	179.9	180.0	180.3	186.2
Exchange rate Index		104.6	104.7	105.0	104.1	102.4	100.4	100.4	100.4	98.9	99.3	99.2	98.3	97.4

Source: Central Statistics Office

Annex III: Kabul Consumer Price Index for December 2008 - December 2009
(March 2004 = 100)

	Dec 2008	Jan 2009	Feb 2009	Mar 2009	Apr 2009	May 2009	Jun 2009	Jul 2009	Aug 2009	Sep 2009	Oct 2009	Nov 2009	Dec 2009
Overall Index	186.0	181.2	171.5	164.3	161.4	161.1	161.8	161.3	163.4	165.2	163.8	162.9	161.4
Monthly % Change													
Food	197.9	190.6	177.2	165.9	161.9	162.0	161.7	161.2	163.7	165.5	162.7	160.6	157
Bread and Cereals	252.6	235.5	207.1	184.2	178.5	179.0	177.8	176.3	177.5	177.1	174.2	168.8	161.7
Meat	131.6	131.2	131.1	130.3	130.2	130.6	129.4	127.3	126.5	128.0	128.0	130.5	129.4
Milk, cheese and eggs	156.7	157.5	157.6	161.0	156.3	151.8	150.8	150.5	154.1	156.5	157.4	157.4	158.8
Oils and fats	147.0	148.8	144.3	141.7	135.9	136.1	138.5	137.8	137.7	138.3	138.4	138.8	139.0
Fresh and dried fruits	153.6	155.0	156.9	157.6	156.5	156.8	159.7	160.1	169.3	175.0	162.8	166.9	154.0
Vegetables incl. tubers	198.8	201.7	198.5	189.0	183.0	184.8	183.9	187.1	193.3	204.2	198.7	195.5	201.0
Sugar and sweets	146.8	150.1	149.6	148.0	149.6	154.8	156.5	156.3	171.1	175.6	171.0	172.7	177.3
Spices	169.1	164.1	167.2	164.9	165.0	165.0	165.3	172.4	172.6	173.4	173.4	173.1	173.3
Non-alcoholic beverages	132.0	132.2	130.6	129.1	129.1	126.8	129.3	130.9	131.2	132.8	133.5	131.7	130.8
Cigarettes and tobacco	105.5	105.2	105.7	106.2	106.7	105.9	105.7	105.7	107.1	106.4	106.1	106.9	108.8
Non-Food	167.0	166.4	162.3	161.7	160.6	159.6	133.2	161.4	162.9	164.7	165.5	166.5	168.5
Clothing	133.9	134.0	134.5	134.3	133.5	133.4	186.3	133.0	134.2	137.4	136.2	137.8	135.6
Housing	195.2	194.2	187.2	185.4	184.1	182.8	178.2	185.1	187.1	188.9	190.4	191.0	195.9
- Rent	175.9	177.1	177.2	177.2	177.6	178.1	134.5	178.9	180.0	182.2	184.7	183.5	183.5
-Construction material	144.2	142.0	137.1	136.2	135.6	133.7	219.2	129.6	131.0	129.4	128.0	128.0	127.6
-Electricity and fuels	239.5	237.0	221.3	217.2	214.0	210.9	120.0	217.7	221.2	224.1	225.9	228.7	241.2
Household goods	118.5	119.7	120.2	119.7	119.6	119.8	193.2	120.2	120.8	121.4	121.8	121.9	121.5
Health	183.5	185.6	183.6	192.1	193.0	192.6	214.5	193.0	193.1	193.3	193.5	192.8	192.4
Transportation	244.3	232.6	216.5	212.9	206.1	200.1	100.0	212.7	217.7	220.3	225.2	234.8	238.5
Communication	100.0	100.0	100.0	100.0	100.0	100.0	100.4	100.0	100.0	100.0	100.0	100.0	100.0
Education	99.8	100.0	100.0	99.9	100.3	100.2	200.1	100.1	100.0	100.2	100.2	99.9	99.2
Miscellaneous	195.0	199.1	200.1	202.0	200.1	200.1	100.4	200.1	200.1	204.7	205.2	200.1	204.4

Source: Central Statistics Office

Annex IV: Retail market price of agricultural commodities in provincial centers in December 2009 (Source: FAAHM)

SN	Region	Province	Wheat Local (Afs/kg)	Wheat Flour imported (Afs/kg)	Rice local (Afs/kg)	Rice imported (Afs/kg)	Maize (Afs/kg)	Mungbeans (Afs/kg)	Pea (Afs/kg)	Potato (Afs/kg)
1	North	Faryab	16	20	40	40	12	40	40	16
2	North	Juzjan	14	21	47	47	13	35	50	14
3	North	Sar-i-Pul	14	18	30	30	10	30	30	16
4	North	Balkh	15	19	35	35	25	28	50	14
5	North	Samangan	12	19	29	29	11	35	42	15
6	North-East	Bughlan	16	20	28	28	11	22	50	13
7	North-East	Kunduz	13	17	32	32	10	30	50	17
8	North-East	Takhar	16	20	35	35	19	18	43	13
9	North-East	Badakhshan	16	22	64	64	20	18	46	17
10	West	Heart	20	20	48	44	11	30	45	20
11	West	Farah	13	23	45	45	20	40	40	22
12	West	Badghis	13	20	50	50	10	45	45	20
13	West-Central	Ghor	19	23			20	55	60	20
14	West-Central	Bamyan	16	20	54	54		40	50	14
15	Central	Kabul	14	18	43	43	14	31	54	14
16	Central	Parwan	17	22	40	40	10	30	55	15
17	Central	Panjsheer	18	22	41	41	12	27	52	18
18	Central	Kapisa	15	19	27	27	8	27	55	13
19	Central	Logar	16	21	32	32	12	30	50	15
20	Central	Wardak	17	21	42	42	17	35	55	13
21	South	Paktya	16	19	33	33	12	21	46	15
22	South	Paktika	18	20	26	26	14	30	60	15
23	South	Khost	17	21	24	24	9	38	29	15
24	South	Ghazni	19	22	40	40	20	35	65	20
25	East	Nangarhar	15	19	20	20	10	30	58	17
26	East	Laghman	17	20	23	23	12	29	50	13
27	East	Kunarha	15	21	37	37	11	29	41	24
28	East	Nooristan	25	35	34	34	11	27	56	10
29	South-West	Kandahar	16	23			11	32	52	12
30	South-West	Helmand	15	21	26	26	10	26	37	11
31	South-West	Zabul	16	21	40	40	12	34	70	15
32	South-West	Nimroz	13	20			11	30	60	25
33	South-West	Uruzgan	20	23	30	30	11	48	50	20
34	South-West	Daikunde	22	28			17	44	39	12

Annex IV: Retail market price of agricultural commodities in provincial centers in December 2009 (Source: FAAHM)

SN	Region	Province	Vegetable oil (Afs/litre)	Milk (Afs/litre)	Beef (Afs/kg)	Mutton (Afs/kg)	Veal (Afs/kg)	Chicken Imported (Afs/kg)	Imported Urea best quality (Afs/kg)	DAP best quality (Afs/kg)
1	North	Faryab	50	30	170	220	220	100	15	22
2	North	Juzjan	58	25	180	200	200	100		
3	North	Sar-i-Pul	50	15	160	180	180	100	16	37
4	North	Balkh	54	20	170	220	220	110	17	38
5	North	Samangan	55	20	170	200	200	110	13	30
6	North-East	Bughlan	60	30	170	200	200	100	17	32
7	North-East	Kunduz	57	20	160	210	210	95	14	15
8	North-East	Takhar	90	25	130	200	200	110	14	28
9	North-East	Badakhshan	90	30	140	200	200	110	15	32
10	West	Heart	57	25	160	270	270	90	17	30
11	West	Farah	70	25	160	200	200	95	16	35
12	West	Badghis	50	30	160	210	210	95	17	35
13	West-Central	Ghor	65		180	200	200	120	12	18
14	West-Central	Bamyan	60	40	150	170	170	140	17	34
15	Central	Kabul	50	30	140	210	210	110	11	27
16	Central	Parwan	55	25	150	200	200	120	14	27
17	Central	Panjsheer	46		150	220	220	140	15	27
18	Central	Kapisa	61	26	150	200	200	110	14	42
19	Central	Logar	60	25	130	200	200	130	15	27
20	Central	Wardak	60	22	150	200	200	110	14	35
21	South	Paktya	62		130	178	178	140	16	28
22	South	Paktika	60	50	130	200	200	130	16	35
23	South	Khost	53		122	164	164	117	14	26
24	South	Ghazni	60	20	150	220	220		18	32
25	East	Nangarhar	52	23	127	202	202	115	13	28
26	East	Laghman	52	24	136	177	177	130	13	27
27	East	Kunarha	59	35	129	147	147	120	14	27
28	East	Nooristan	67		165	190	190	125	29	40
29	South-West	Kandahar	58	29	160	210	210	90	13	28
30	South-West	Helmand	65	27	150	200	200	80	18	43
31	South-West	Zabul	56		135	200	200	90	15	28
32	South-West	Nimroz	59	50	163	223	223	100	19	35
33	South-West	Uruzgan	55		180	230	230	100	40	58
34	South-West	Daikunde	90		160	200	200		27	60

Annex IV: Retail market price of agricultural commodities in provincial centers in December 2009 (Source: FAAHM)

SN	Region	Province	Agriculture labour (Afs/day)	Pair of oxen hiring (Afs/day)	Water pump charge (Afs/hour)	Tractor hiring charge (Afs/hour)	Diesel (Afs/Litre)	Liquid Gas (Afs/kg)	Kerosene (Afs/litre)	Petrol (Afs/litre)
1	North	Faryab	300	600	120	600	50	50		45
2	North	Juzjan	200	600	200	700	45	50		40
3	North	Sar-i-Pul	200	1,000		750	48	60		38
4	North	Balkh	200	700	280	800	48	50		38
5	North	Samangan	180	600		700	44	60		40
6	North-East	Bughlan	200	600	300	600	47	60		38
7	North-East	Kunduz	200	400		850	45	55		38
8	North-East	Takhar	250	800		800	50	60		40
9	North-East	Badakhshan	250	800			52	70		40
10	West	Heart	200	1,000		600	50	50		40
11	West	Farah	200		700	650	50	65	50	42
12	West	Badghis	250	500		850	50	55	60	50
13	West-Central	Ghor	150				70	70		50
14	West-Central	Bamyan	300	1,200		800	52	70		46
15	Central	Kabul	170	650		400	44	55	53	37
16	Central	Parwan	250	600	220	700	45	55		40
17	Central	Panjsheer	250	600		1000	52	65		43
18	Central	Kapisa	200	600	275	600	45	50	50	42
19	Central	Logar	250	1,300		600	49	60	70	40
20	Central	Wardak	250	500	150	500	50	60		45
21	South	Paktya	200			450	47	53	45	44
22	South	Paktika	200		210		52	60	60	
23	South	Khost	200		250	480	45	50		41
24	South	Ghazni	250	600	250	400	48	55		48
25	East	Nangarhar	144	722	115	433	46	64	46	40
26	East	Laghman	150	450	150	414	52	60		41
27	East	Kunarha	120			353	50	71		
28	East	Nooristan	250	400			62	70		50
29	South-West	Kandahar	200			550	48	58		44
30	South-West	Helmand	200		180	1,000	45	60	40	45
31	South-West	Zabul	200		400	410	50	60	45	46
32	South-West	Nimroz	300			600	49	85		50
33	South-West	Uruzgan	300			650	61	56	61	52
34	South-West	Daikunde	200	1200	500	1,500	55	75		65

وزارت زراعت، مالداري و مواد غذائي

قيمت هاي محصولات زراعتي در مارکيت هاي ولايات

Annex V: Retail market prices of selected agricultural commodities

به افغانی فی کيلو گرام (Kg/Afg)

هفته سوم ماه قوس سال 1388

(Jan 09 - 14 Jan 2010)

شماره	منطقه Region	ولایات Province	گندم محلی (LocalW)	آرد وارداتی (ImpWF)	گوشت گاو (Beef)	گوشت گوساله (Veal)	گوشت گوسفند (Mutton)
1	شمال North	فاریاب Faryab	15	19	170	190	220
2	شمال North	جوزجان Juzjan	14	21	120	180	200
3	شمال North	سرپل Sar-i-pul	15	18	160	180	200
4	شمال North	بلخ Balkh	14	17	180	190	200
5	شمال North	سمنگان Samangan	12	18	180	190	200
6	شمال شرق North East	بغلان Bughlan	16	20	170	190	200
7	شمال شرق North East	کندز Kunduz	13	16	160	180	210
8	شمال شرق North East	تخار Takhar	13	19	140	160	180
9	شمال شرق North East	بدخشان Badakhshan	16	22	180	180	220
10	غرب West	هرات Heart	13	19	160	220	300
11	غرب West	فراه Farah	14	22	170	170	230
12	غرب West	بادغیس Badghis	14	18	150	170	200
13	غرب مرکزی West central	غور Ghor	19	23	160	170	200
14	غرب مرکزی West central	بامیان Bamyān	14	17	150	150	170
15	مرکزی Central	کابل Kabul	15	17	140	170	215
16	مرکزی Central	پروان Parwan	15	20	150		200
17	مرکزی Central	پنجشیر Panjsher	17	21	150	170	220
18	مرکزی Central	کاپیسا Kapisa	14	18	150	160	200
19	مرکزی Central	لوگر Logar	15	17	130	170	200
20	مرکزی Central	وردک Wordak	15	17	150	170	230
21	جنوب South	پکتیا Paktia	16	20	128		220
22	جنوب South	پکتیکا Paktika	19	18	120	145	190
23	جنوب South	خوست Khost	15	18	125		160
24	جنوب South	غزنی Ghani	18	21	150	180	240
25	شرق East	ننگرهار Nangarhar	15	17	127	144	207
26	شرق East	لغمان Laghman	13	17	163	153	177
27	شرق East	کنرہا Kunarha	14	16	124	130	170
28	شرق East	نورستان Nooristan	24	34	165	175	190
29	جنوب غرب South west	کندهار Kandahar	15	22	175	185	220
30	جنوب غرب South west	هلمند Helmand	15	21	150	170	200
31	جنوب غرب South west	زابل Zabul	16	21	130		200
32	جنوب غرب South west	نیمروز Nimroz	13	17	160	200	250
33	جنوب غرب South west	ارزگان Uruzgan	23	26	200	220	300
34	جنوب غرب South west	دایکندی Daikundy	22	28	160	160	200

Annex VI: Agricultural commodity Prices in border towns

Year: 2009

Month: December

Sn	Commodity	Unit	(Herat)	(Herat)	(Kunduz)	(Balkh)	(Kandahar)	(Nimroz)	(Jalalabad)
			Islam Qala Price (Afs)	Torghondi Price (Afs)	Shir Khan Price (Afs)	Hairatan Price (Afs)	Spin Boldak Price (Afs)	Zaranj Price (Afs)	Torkham Price (Afs)
1	Imported wheat	Kg				13	14		
2	Local wheat	Kg	12	13	13	15	15	15	
3	Imported flour	Kg	21	20	20	18	20	22	20
4	Local Flour	Kg	13	13	14	20			
5	Local Rice	Kg	50	55	26	38			26
6	Imported Rice	Kg	55	50	56	50	42	45	60
7	Beef	Kg	160	160	160	157	132	140	130
8	Chicken	Kg	95	100	110	140	90	100	120
9	Mutton	Kg	230	220	190	220	200	210	210
10	Buffalo meat	Kg							120
11	DAP	Kg		30	30	38	27	28	
12	Imported urea	Kg	16	16	15	18	13	14	
13	Other Fertilizers	Kg	20		16	18			
14	Vegetable oil	Liter	57	60	57	53	44	45	56
15	Potato	Kg	18	20	14	17	8	15	12
16	Onion	Kg	10	10	8	10	6	10	11
17	Grape	Kg				40	21	26	42
18	Pomegranate	Kg	40	45	50	40			45
19	Apricot	Kg							
20	Apple	Kg	40	45	40	40	30		30
21	Chickpea	Kg	40	35	60	50	51	55	43
22	Sesame	Kg			41	60	36		
23	Mung bean	Kg	27	30	22	25	33	38	27
24	Liquid Gas	Kg	45	43	60	50	37	30	57
25	Kerosene	Liter	45	42			38	37	37
26	Diesel	Liter	44	47	46	39	40	38	36
27	Petrol	Liter	38	38	37	35	39	38	35
28	Imported Saffron	Kg	160,000	161,000					

**Annex VII: Weekly retail market prices of fruits and vegetables in Kabul, Kunduz, Herat, Kandahar and Jalalabad in December 2009/January 2010
(Afs/Kg.)**

Fruits/ Vegetables	Kabul					Kunduz					Herat					Kandahar					Jalalabad									
	Dec WK1	Dec WK2	Dec WK3	Dec WK4	Dec Mean	Jan WK1	Dec WK1	Dec WK2	Dec WK3	Dec WK4	Dec Mean	Jan WK1	Dec WK1	Dec WK2	Dec WK3	Dec WK4	Dec Mean	Jan WK1	Dec WK1	Dec WK2	Dec WK3	Dec WK4	Dec Mean	Jan WK1	Dec WK1	Dec WK2	Dec WK3	Dec WK4	Dec Mean	Jan WK1
Apple	28	29	29	32	30	34	55	50	50	50	51	50	40	40	35	37	38	40	18	18	19	19	19	18	33	35	38	36	36	35
Apricot																														
Pear	56	56	56	56	56	55	65	60	50	60	59	65	80	65	70	75	73	80							40	41	39	32	38	38
Peach																														
Plum																														
Cherry																														
Sweet Cherry																		50												
Pomegranate	30	29	29	35	31	37	55	60	60	60	59	60	50	50	50	47	49		20	23	23	23	22	24	40	42	45	48	44	43
Mango																														
Fig	120	125	125	135	126	140																								
Banana	40	30	30	35	34	33	30	35	30	30	31	30	55	52	50	52	52	55	32	33	30	30	31	29	35	36	35	35	35	33
Citrus	23	39	39	24	31	22	70	60	50	45	56	30	30	28	20	20	25	17	23	20	15	15	18	14	33	32	30	30	31	15
Grape	32	35	35	26	32	50						90	100	100	100	98	100							60	65				15	
Water Melon	30	28	28	32	30	35	11		12		12		20	25	20	20	21	20												
Melon	35	36	36	45	38	20	15	16	17		16																			
Potato	18	14	14	16	16	15	14	15	15	15	15	15	20	20	15	15	18	15	12	11	11	11	11	10	14	15	15	14	15	12
Tomato	26	23	23	22	24	23	45	40	35	30	38	25	50	35	25	25	34	20	15	12	11	12	12	9	16	13	13	13	14	12
Eggplant	20	19	19	21	20	22	18	15	25	20	20	20	30	25	20	20	24	20	18	18	17	17	18	16	8	8	8	8	8	7
Okra	70	67	67	65	67	60													23	32	35	35	31	33	66	68	68	70	68	
Onion	10	10	10	9	10	9	8	9	8	8	8	8	10	11	10	10	10	10	9	8	9	9	9	9	9	10	9	9	9	9
Cauliflower	11	10	10	8	10	9	23	25	30	30	27	25	15	15	15	15	15	15	11	13	11	12	12	10	14	12	10	10	12	10
Cucumber	52	50	50	48	50	44	35		35	35	35		45	40	40	45	43	40	35	39	38	38	38	38	48	48	50	50	49	42
Pepper	30	32	32	28	31	25	65	65	50	40	55	45	110	100	70	60	85	65	56	57	55	45	53	54	27	27	27	27	27	25
Squash	22	21	21	22	22	20	10	10	10	10	10	10	30	25	20	20	24	20	11	11	9	9	10	8	8	8	8	8	8	7
Leek	21	22	22	22	22	19	15	15	15	15	15	14	30	30	35	30	31	30	18	18	16	16	17	17	23	21	20	20	21	14
Spinach	22	23	23	21	22	20	10	8	10	10	10	10	10	15	12	13	12	11	16	15	13	13	14	12	7	8	8	5	7	8
Coriander	21	22	22	21	22	21	20	20	20	20	20	20	30	30	32	30	31	30	30	31	27	27	29	26	52	30	40	38	40	25
Carrot	11	10	10	10	10	9	6	5	5	4.5	5	4	10	10	7	8	9	9	8	9	8	8	8	7	10	10	10	9	10	7
Cabbage	26	27	27	26	27	25	32	30	30	30	31	30	15	15	15	15	15	15						25	25	25	25	25	25	18
Turnip	9	8	8	8	8	8	6	5	5	4.5	5	5	8	10	7	5	7	8	9	9	8	8	9	7	7	7	7	6	7	6
Garlic	70	70	70	72	71	73	60	70	65	60	64	55	100	100	90	110	100	100	96	99	99	99	98	100	93	92	90	90	91	90

Annex VIII: Weekly market price of agricultural commodities/services

Location (Province)	Commodity/Services	Oct 09				Nov 09				Dec 09				Jan 10
		Week 1	Week 2	Week 3	Week 4	Week 1	Week 2	Week 3	Week 4	Week 1	Week 2	Week 3	Week 4	Week 1
Kabul (Kabul)	Wheat (kg)	19.0	19.5	19.5	18.5	18.0	18.0	18.0	18.0	18.4	18.5	18.6	18.5	15.0
Kandahar (Kandahar)	Wheat (kg)	19.0	19.0	19.0	19.0	19.0	19.0	19.0	19.0	18.0	18.0	17.0	17.0	17.0
Jalalabad (Nagarhar)	Wheat (kg)	16.0	16.3	17.0	17.0	17.7	16.0	17.0	16.7	16.0	15.0	15.0	14.0	13.0
Herat (Herat)	Wheat (kg)	12.3	12.3	12.3	12.1	12.3	11.9	12.1	12.0	12.3	12.0	12.0	12.0	11.5
Mazar (Balkh)	Wheat (kg)	13.0	14.0	14.0	14.0	13.5	12.5	13.0	12.5	12.5	12.0	12.0	12.5	12.0
Faizabad (Badakhshan)	Wheat (kg)	17.1	17.1	17.1	17.1	17.1	17.1	17.1	17.1	17.1	15.7	15.7	15.7	15.7
Maimana (Faryab)	Wheat (kg)	16.5	16.5	17.3	16.0	17.1	15.7	14.3	15.7	17.0	15.7	14.5	16.4	14.0
Nili (Daikundy)	Wheat (kg)	22.0	22.0	22.0	22.0	22.0	22.0	22.0	22.0	22.0	23.0	24.0	23.0	23.0
Ghor (Ghor)	Wheat (kg)	12.0	10.0	10.0	10.0	10.0	10.0	10.0	11.0	11.0	11.0	12.0	12.0	12.0
Kabul (Kabul)	Wheat flour (kg)	21.0	21.5	21.5	20.5	21.6	21.7	21.7	21.5	21.6	21.5	21.6	21.7	17.6
Kandahar (Kandahar)	Wheat flour (kg)	22.0	22.0	22.0	23.0	23.0	22.0	22.0	22.0	21.0	21.0	20.0	20.0	20.0
Jalalabad (Nagarhar)	Wheat flour (kg)	22.2	22.0	22.3	22.8	23.5	20.0	21.0	20.7	20.0	18.0	18.0	17.0	16.0
Herat (Herat)	Wheat flour (kg)	21.9	21.3	21.3	19.4	22.5	20.0	18.0	18.0	17.5	17.5	17.0	17.5	17.5
Mazar (Balkh)	Wheat flour (kg)	17.0	17.0	17.0	17.0	18.0	18.0	18.0	18.0	19.0	17.0	17.0	17.0	15.0
Faizabad (Badakhshan)	Wheat flour (kg)	22.8	22.8	21.4	21.4	21.4	21.4	21.4	21.4	24.2	22.8	22.8	22.8	22.8
Maimana (Faryab)	Wheat flour (kg)	18.0	18.0	20.0	19.5	19.7	18.6	20.0	20.5	21.0	20.5	18.0	18.6	18.0
Nili (Daikundy)	Wheat flour (kg)	27.0	28.0	28.0	28.0	27.0	27.0	27.0	28.0	27.0	28.0	29.0	29.0	29.0
Ghor (Ghor)	Wheat flour (kg)	25.0	25.0	24.0	24.0	24.0	24.0	24.0	27.0	25.0	25.0	28.0	28.0	29.0
Kabul (Kabul)	Bread (kg)	32.5	32.5	32.5	32.5	32.5	32.0	32.0	32.0	31.4	30.8	30.2	29.6	29.1
Kandahar (Kandahar)	Bread (kg)	40.0	40.0	40.0	40.0	40.0	40.0	40.0	40.0	40.0	30.0	30.0	30.0	30.0
Jalalabad (Nagarhar)	Bread (kg)	53.3	53.3	53.3	53.3	53.3	53.3	53.3	53.3	53.3	53.3	53.3	53.3	33.3
Herat (Herat)	Bread (kg)	29.4	29.4	30.0	29.4	30.0	30.0	30.0	30.0	30.0	30.0	30.0	30.0	30.0
Mazar (Balkh)	Bread (kg)	25.0	25.0	25.0	25.0	25.0	25.0	25.0	25.0	25.0	29.4	29.4	29.4	27.8
Faizabad (Badakhshan)	Bread (kg)	55.6	55.6	55.6	55.6	55.6	55.6	55.6	55.6	50.0	50.0	50.0	50.0	50.0
Maimana (Faryab)	Bread (kg)	33.0	33.0	33.0	32.0	33.0	33.0	33.0	33.0	34.0	33.3	32.0	32.0	31.0
Nili (Daikundy)	Bread (kg)	45.0	45.0	45.0	45.0	45.0	45.0	45.0	45.0	45.5	45.5	45.5	45.5	45.5
Ghor (Ghor)	Bread (kg)	35.0	35.0	35.0	35.0	35.0	35.0	35.0	35.0	35.0	35.0	35.0	35.0	35.0

Annex VIII: Weekly market price of agricultural commodities/services

Location (Province)	Commodity/Services	Oct 09				Nov 09				Dec 09				Jan 10
		Week 1	Week 2	Week 3	Week 4	Week 1	Week 2	Week 3	Week 4	Week 1	Week 2	Week 3	Week 4	Week 1
Kabul (Kabul)	Diesel/litre	38.0	40.0	39.0	36.0	36.0	46.0	46.0	47.0	52.0	58.0	57.0	44.0	42.0
Kandahar (Kandahar)	Diesel/litre	35.0	37.0	41.0	47.0	44.0	48.0	50.0	50.0	48.0	48.0	48.0	45.0	46.0
Jalalabad (Nagarhar)	Diesel/litre	36.8	36.8	37.0	38.0	38.0	42.0	42.0	42.0	44.0	48.0	48.0	46.0	46.0
Herat (Herat)	Diesel/litre	33.0	32.0	42.0	44.0	42.0	44.0	48.0	48.0	46.0	46.0	42.0	42.0	42.0
Mazar (Balkh)	Diesel/litre	34.0	34.0	37.0	36.0	42.0	42.0	42.0	42.0	48.0	48.0	48.0	48.0	40.0
Faizabad (Badakhshan)	Diesel/litre	40.0	40.0	43.0	45.0	45.0	45.0	45.0	45.0	55.0	54.0	50.0	46.0	44.0
Maimana (Faryab)	Diesel/litre	39.0	39.0	40.0	43.0	42.0	45.0	45.0	45.0	48.0	47.0	45.0	46.0	48.0
Nili (Daikundy)	Diesel/litre	42.0	42.0	42.0	42.0	50.0	50.0	52.0	53.0	55.0	55.0	55.0	55.0	55.0
Ghor (Ghor)	Diesel/litre	37.0	38.0	45.0	45.0	50.0	53.0	55.0	55.0	55.0	55.0	60.0	60.0	60.0
Kabul (Kabul)	One-year female sheep, live	5,300	5,350	5,350	5,350	5,350	5,350	5,350	5,200	5,250	5,250	5,250	5,300	5,300
Kandahar (Kandahar)	One-year female sheep, live	5,000	5,000	5,000	5,000	5,000	5,000	5,500	6,000	5,000	5,000	5,000	5,000	5,000
Jalalabad (Nagarhar)	One-year female sheep, live	4,000	4,000	4,000	4,000	4,000	4,500	5,000	5,000	5,300	5,300	5,300	5,300	5,300
Herat (Herat)	One-year female sheep, live	3,550	3,550	3,550	3,580	3,600	3,650	3,800	3,600	3,600	3,600	3,600	3,600	3,650
Mazar (Balkh)	One-year female sheep, live	4,200	4,300	4,200	4,300	4,300	4,300	4,300	4,400	4,350	4,300	4,500	4,600	4,600
Faizabad (Badakhshan)	One-year female sheep, live	2,800	2,800	2,800	2,800	2,800	3,000	3,000	2,800	2,800	2,800	2,800	2,800	2,800
Maimana (Faryab)	One-year female sheep, live	5,000	5,000	5,100	5,200	5,200	5,500	5,500	5,000	5,400	6,400	6,500	6,500	6,300
Nili (Daikundy)	One-year female sheep, live	3,800	3,800	3,800	3,800	3,800	3,800	3,800	3,800	3,800	3,800	3,800	3,800	3,800
Ghor (Ghor)	One-year female sheep, live	5,000	5,200	5,000	5,000	5,000	5,000	5,000	5,500	5,500	5,500	5,000	5,000	5,000
Kabul (Kabul)	Casual labour/day (unskilled)	250	250	250	250	250	250	250	250	250	240	240	250	250
Kandahar (Kandahar)	Casual labour/day (unskilled)	250	250	250	250	250	250	250	250	250	250	250	250	250
Jalalabad (Nagarhar)	Casual labour/day (unskilled)	230	230	230	230	230	230	230	230	230	230	230	230	230
Herat (Herat)	Casual labour/day (unskilled)	250	250	250	250	250	250	250	250	250	250	250	250	250
Mazar (Balkh)	Casual labour/day (unskilled)	160	160	150	150	150	150	150	140	140	140	140	140	140
Faizabad (Badakhshan)	Casual labour/day (unskilled)	250	250	250	250	300	300	300	300	300	300	250	250	250
Maimana (Faryab)	Casual labour/day (unskilled)	350	350	290	300	320	300	300	280	270	300	280	300	300
Nili (Daikundy)	Casual labour/day (unskilled)	200	200	200	200	200	200	200	200	250	250	250	250	250
Ghor (Ghor)	Casual labour/day (unskilled)	250	300	250	250	250	250	250	250	250	250	250	250	250

**Annex IX: Monthly average price of wheat in international market
(US\$/tonne)**

Wheat type	Year	Jan	Feb	Mar	Apr	May	Jun	Jul	Aug	Sep	Oct	Nov	Dec
Argentina, Up River, fob (1)	2004	161	151	151	160	157	145	139	126	126	121	116	111
	2005	107	113	127	129	133	133	143	142	137	132	135	130
	2006	132	137	136	136	144	156	158	160	166	192	187	184
	2007	185	174	185	209	218	235	254	268	325	322	295	310
	2008	325	361	395								189	174
	2009	208	219	216	212	208	226	234	229	207	213	214	239
US No. 2 Hard Red Winter ord., US fob Gulf (1)	2004	170	165	168	173	167	160	154	146	154	155	163	160
	2005	157	154	158	149	151	148	148	155	166	175	167	167
	2006	170	181	181	187	199	204	213	199	207	218	218	218
	2007	209	207	209	206	203	225	246	273	342	354	335	381
	2008	377	439	482	389	350	358	343	341	312	260	247	235
	2009	256	241	246	242	261	270	233	218	201	209	228	222
US No. 2 Soft Red Winter, fob US Gulf (2)	2004	155	157	156	160	150	140	135	130	137	140	141	138
	2005	142	143	155	134	134	133	131	129	128	135	133	137
	2006	143	148	144	141	148	142	146	143	162	197	192	190
	2007	176	174	170	171	180	200	217	250	323	327	308	345
	2008	340	394	397	309	260	249	247	250	225	188	182	177
	2009	195	183	185	183	196	206	177	161	160	171	204	207

Sources:

(1) International Grain Council

(2) USDA

